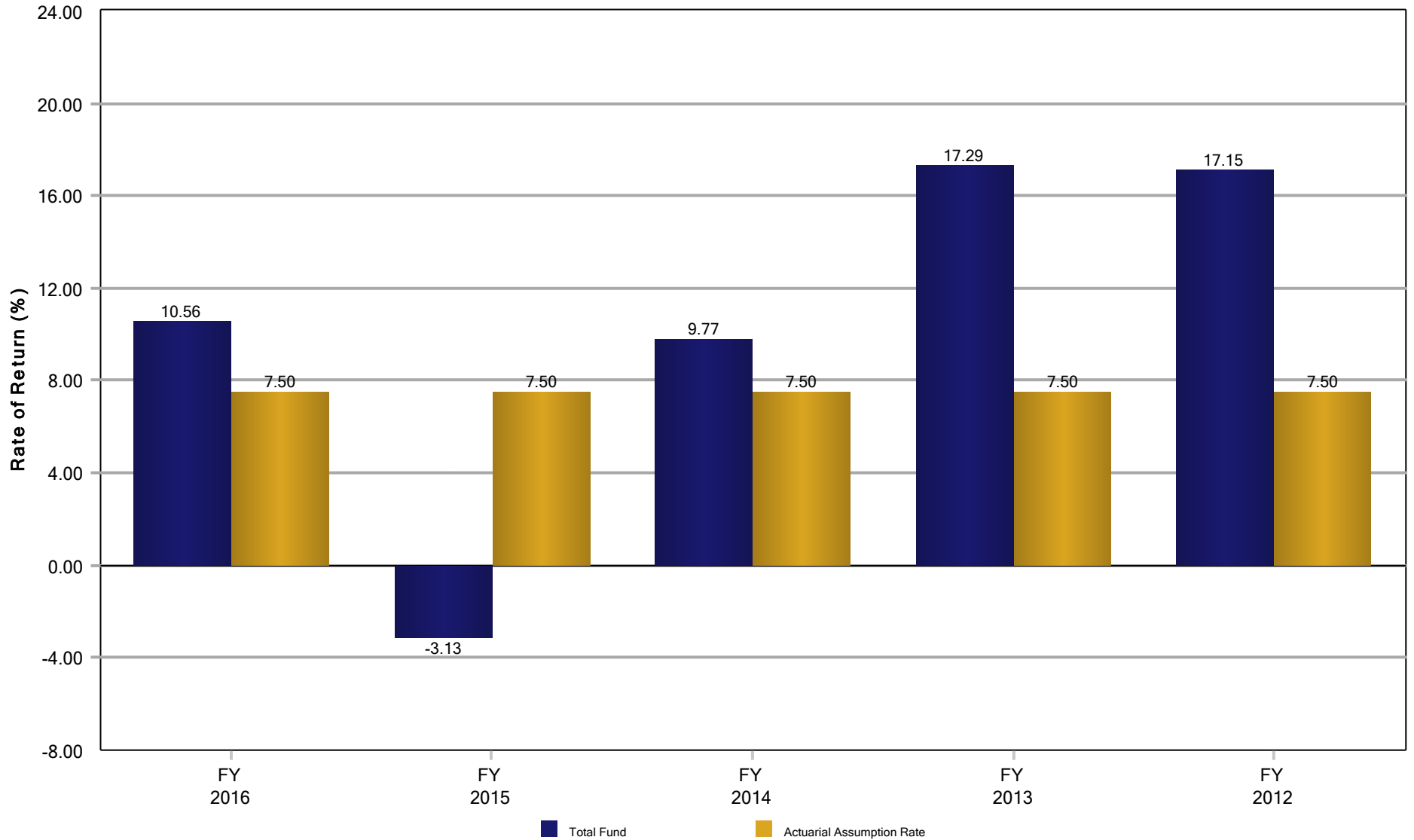


Haines City Municipal Police Officers Retirement Trust Fund
Fiscal Year Rates of Return
September 30, 2016

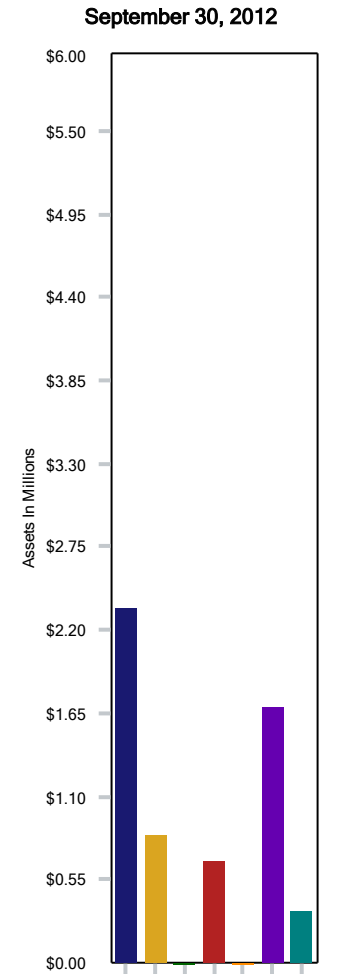
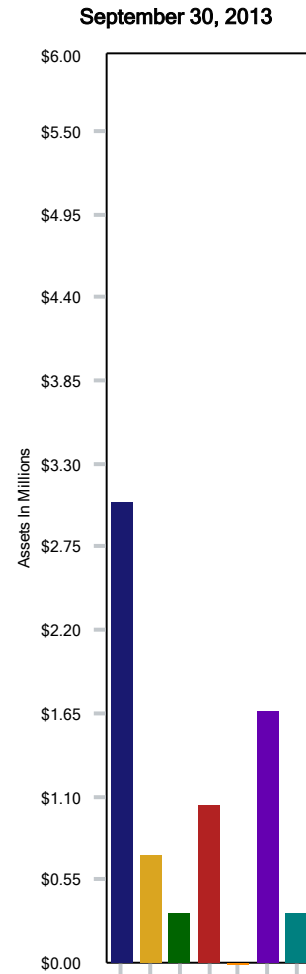
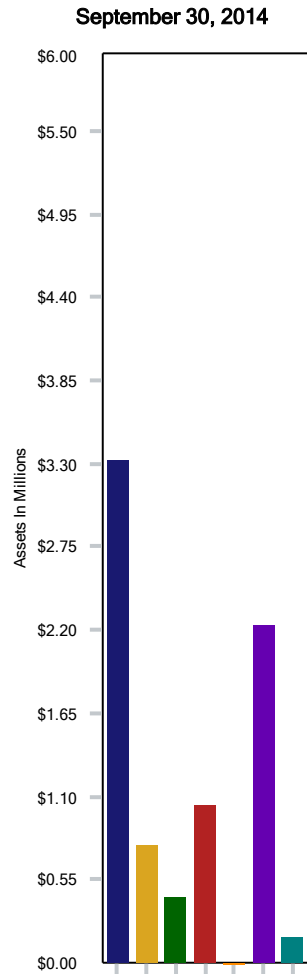
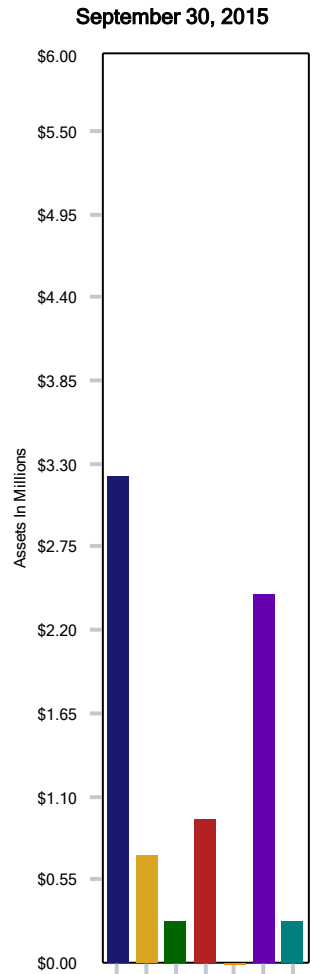
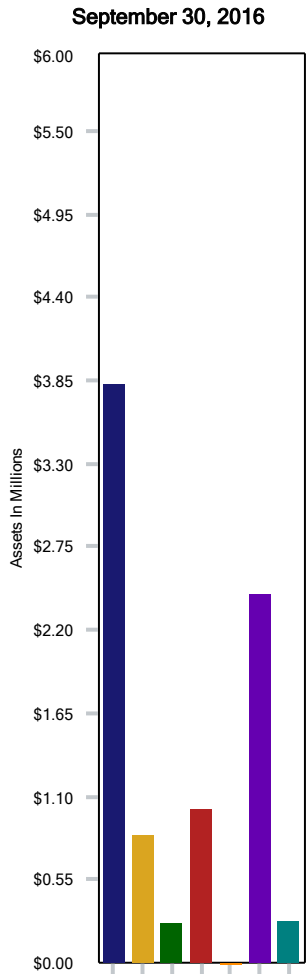


Disclosure: Actuarial assumption rate as of 9/30/2016. Past performance is not indicative of future results.

Haines City Municipal Police Officers Retirement Trust Fund

Historical Asset Allocation

September 30, 2016



■ Domestic Equity	44.11
■ Convertibles	9.80
■ MLPs	3.08
■ International Equity	11.77
■ Private Real Estate	0.00
■ Fixed Income	28.07
■ Cash	3.17

■ Domestic Equity	40.92
■ Convertibles	9.03
■ MLPs	3.46
■ International Equity	12.12
■ Private Real Estate	0.00
■ Fixed Income	30.94
■ Cash	3.53

■ Domestic Equity	41.73
■ Convertibles	9.75
■ MLPs	5.44
■ International Equity	13.07
■ Private Real Estate	0.00
■ Fixed Income	27.90
■ Cash	2.11

■ Domestic Equity	42.76
■ Convertibles	9.96
■ MLPs	4.68
■ International Equity	14.62
■ Private Real Estate	0.00
■ Fixed Income	23.31
■ Cash	4.66

■ Domestic Equity	39.71
■ Convertibles	14.30
■ MLPs	0.00
■ International Equity	11.44
■ Private Real Estate	0.00
■ Fixed Income	28.69
■ Cash	5.86